



# ALUMED

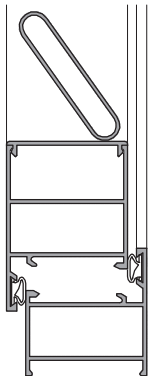
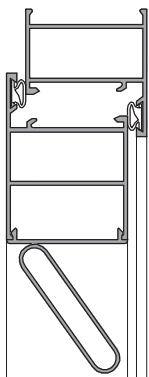
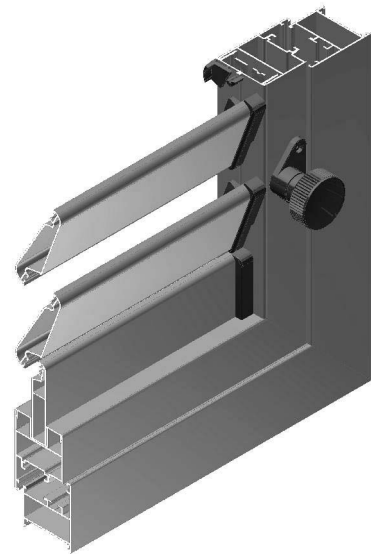
ALUMINIUM SYSTEMS

01-02-2020

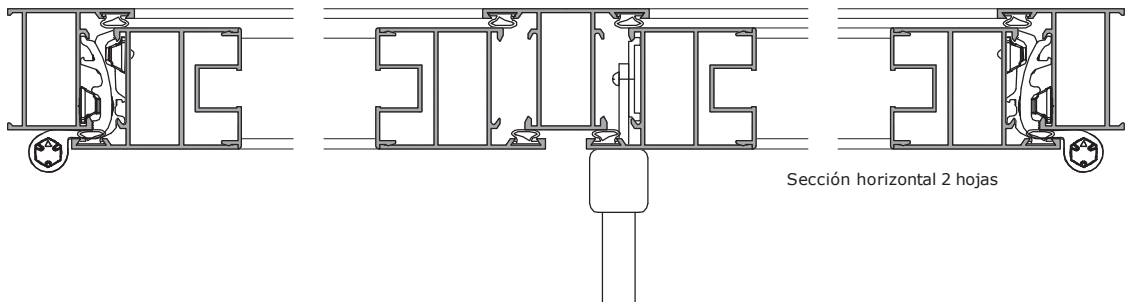
*Serie Control Solar*

## MALLORQUINA 40X20

- Sistema mallorquina
- Marcos de 40 mm de anchura.
- Variedad de perfiles para ventanas, balconeras y puertas.
- Variedad de lamas fijas y móviles.
- Escudras en extrusión de aluminio.
- Compatibilidad con otras series de Alumed.
- Variedad de soluciones en obra.
- Perfiles de aluminio aleación 6063-T5



Sección Vertical



Sección horizontal 2 hojas

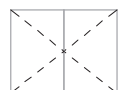
### OPCIONES DE APERTURA



Fijo

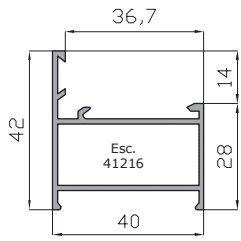


Practicable  
Aper. Ext.

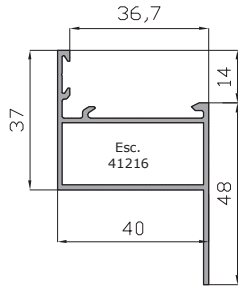


Practicable  
Aper. Ext. 2 hojas

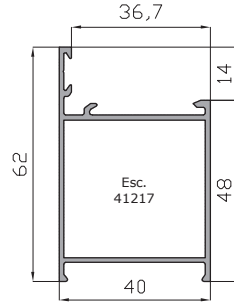
# Mallorquina 40-20/40-40 - Relación de Perfiles.



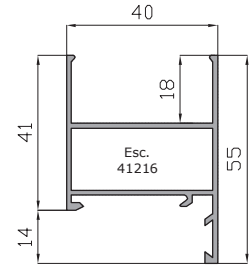
Marco de Ventana 40x20  
**11127**



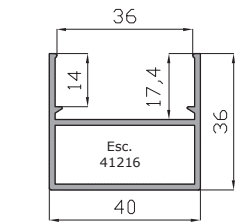
Marco Solape 40x20  
**11518**



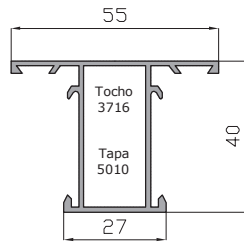
Marco Puerta 40x20  
**11125**



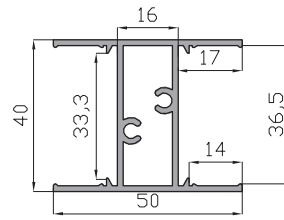
Hoja Mallorquina 40x20  
**11131**



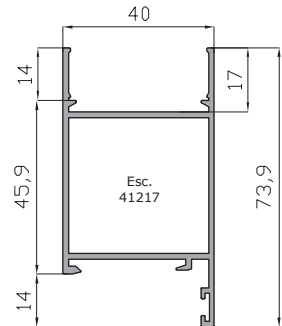
Marco Fijo Mallorquina 40x20  
**18340**



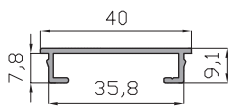
Pilastra ventana 40x20  
**11128**



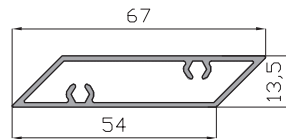
Zocalo de 50 MM  
**14723**



Hoja Mallorquina Puerta 40x20  
**24023**



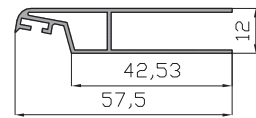
Tapa lama troquelar  
**19138**



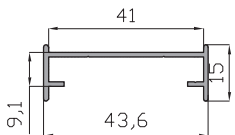
Lama Romboidal autorroscada  
**12846**



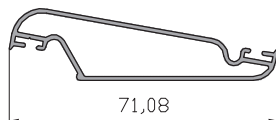
Lama Fija Mallorquina  
**2989**



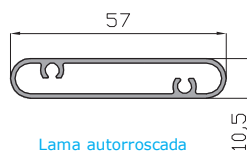
Media Lama de 57.5 mm  
**14720**



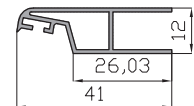
Base lama troquelada  
**15441**



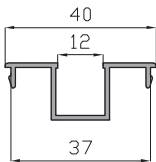
Lama Mallorquina Perla 70  
**14719**



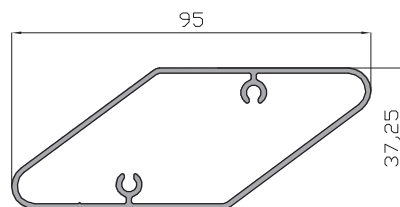
Lama autorroscada  
**18752**



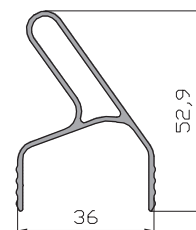
Media Lama 41 mm  
**14721**



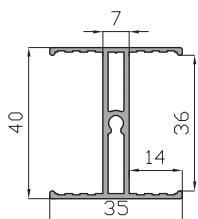
Perfil base  
**18386**



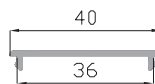
Lama romboidal autorroscada  
**18315**



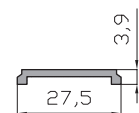
Terminal Lama  
**18314**



Divisor Mallorquina 35 MM  
**18311**



Tapeta lisa  
**18751**



Pletina falleba 40-20  
**11697**





# ALUMED

ALUMINIUM SYSTEMS

## "40 ANIVERSARIO"

[www.alumed.es](http://www.alumed.es) - [www.alumedistemas.com](http://www.alumedistemas.com)

C/. Del Dracma - Parcelas 69-74  
Buzón 20114 - POL. Ind. Las Atalayas  
Tlfn. 965 170 026 - Fax. 965 170 032  
03114 **ALICANTE**  
[alicante@alumed.es](mailto:alicante@alumed.es)

Vial 3, Nave 16-17 - Pol. Son Llaut.  
Telfn. 971 141 061 - Fax 971 141 064  
07320 **SANTA MARIA DEL CAMI** (Mallorca)  
[mallorca@alumed.es](mailto:mallorca@alumed.es)

Pol. Ind. Fuente del Jarro  
C/ Ciudad de Barcelona, 1R  
Telfn. 961 345 275 - Fax 961 345 279  
46988 **PATERNA** (Valencia)  
[valencia@alumed.es](mailto:valencia@alumed.es)